

General Audio Research

RED47

TUBE MIC PREAMP

BOM+DOC

this board offer a possibility to make this legendary preamp

WARNING!

This modification is for technicians only. It subjects you to the health and safety risks associated with chemical solvents and soldering. You must use all normal safety precautions when working with these tools and materials.

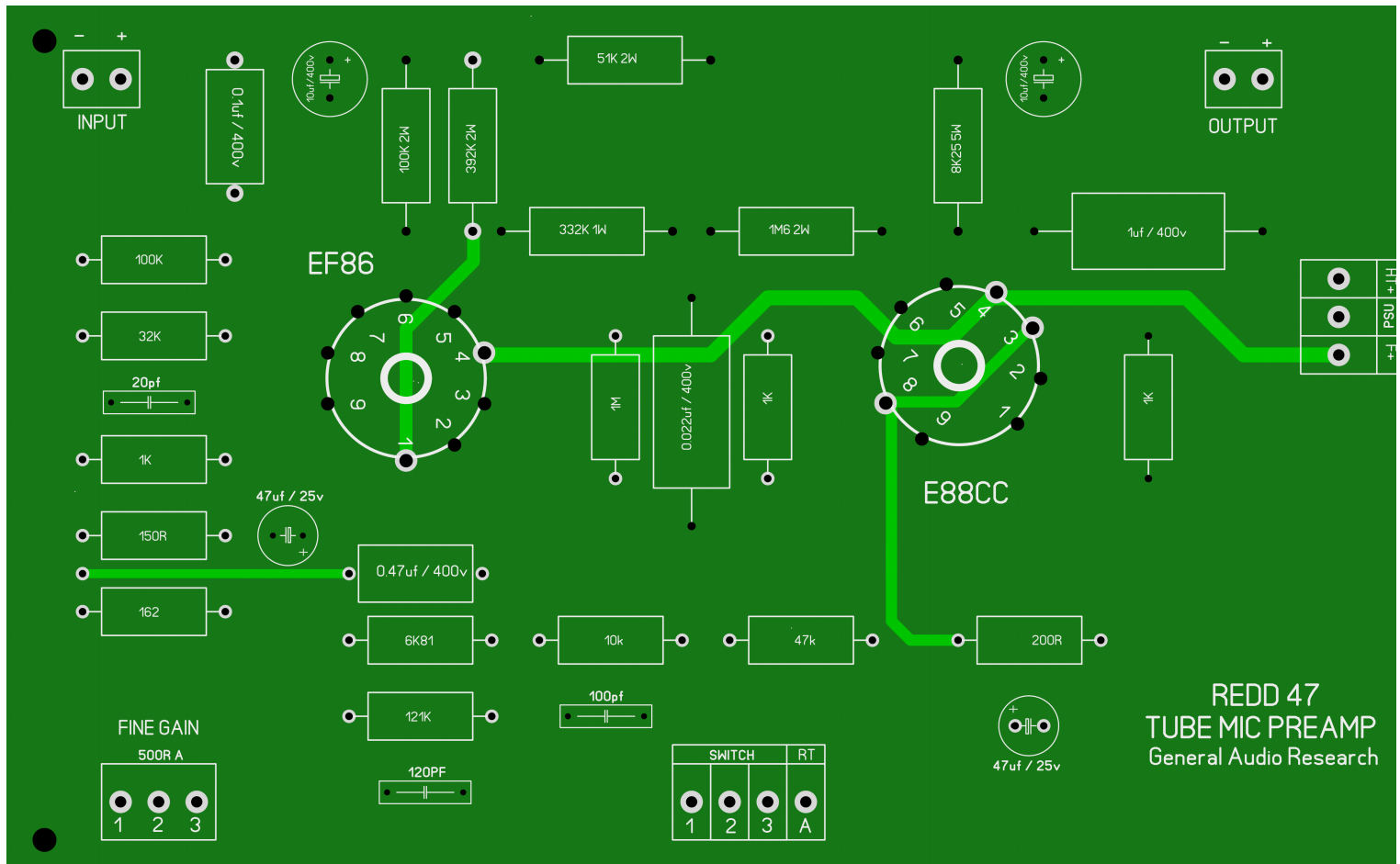
General Audio Research and its principals are not responsible for any injury that may occur should you proceed with this modification.

General Audio Research are indemnified from any damage to your audio equipment and any connected electronic, your other property, and your person, that results from the operation of your equipment after you have tampered with it.

! warning !

tube preamp use lethal High voltage.

Difficult level / MEDIUM



Caractéristiques :

- Vintage clone RED47 TUBE mic preamp
- 34,40, 46 dB gain
- Frequency 20hz-18khz
- EF86 & e88c tube
- Fine gain
- Switch 3 positions gain

Composant électronique

RESISTANCES:

(i recomand vintage carbon resistor for close original preamp)

- 100k
- 32k

- 150r
- 162r
- 6k81
- 124k
- 10k
- 47k5
- 200r
- 1M
- 1k quantity : 3
- 100k **2watt**
- 392k **2watt**
- 51k **2watt**
- 332k **2watt**
- 1M6 **2watt**
- 8k25 **8 watt minimum !!**

this heating resistor must leave a space between the pcb and the resistor



CONDENSATEUR :

- 0.1uf /400V mkp
- 0.022uf /400v mkp
- 0.47uf /400v mkp
- 1uf /400v mkp

- 20pf ceramic
- 220pf ceramic / styroflex / mica
- 100pf ceramic / styroflex / mica

- 47uf /25v électrolytique quantity :2
- 10uf /400v électrolytique quantity : 2

POTENTIOMETRE

- 1k LOG (i change the value for 1k log) fine gain is completely useless, 2 db variation !! but close to original schematic !!

SWITCH

- 1 shorting MBB (move befor break) we need 3 input and 1 output type lorlin switch
- input switch = 1 ,2 ,3
- output switch = A



Connecteur (optional)

- molex 2 pin screw x2
- molex 3 pin screw x2
- molex 3 pin screw x1

Tube socket

- noval socket x2

TUBE AUDIO

- ef86
- e88cc

FOR BUILD THIS PREAMP YOU NEED

Transformer HT + filament (exemple)

Transformateur 1x200V + 1x6.3V

REGULATED POWER SUPPLY pcb

- 280 VDC HT B+
- 6.3 VDC filament tube

Transformateur audio(**for mic preamp**)

Input mic : primaire 150, 200 or 600 ohm / secondaire 15k or 20k or 50k 1:10 ratio

Output ligne : primaire 10k / secondaire 600 ohm or ratio 10:1 ratio

i recommande sowter UK , jensen , vigortronix for low budget

INPUT :

SOWTER TYPE 9970

Jensen JT-115K-E

vigortronix VTX-102-003. 600/25K

OUTPUT :

SOWTER TYPE 9980

JT-10K61-1M

We strongly recommend the use of a commercial flux remover to clean the circuit board. 99% Isopropyl could also work, or a commercial contact cleaner .

OK ITS DONE