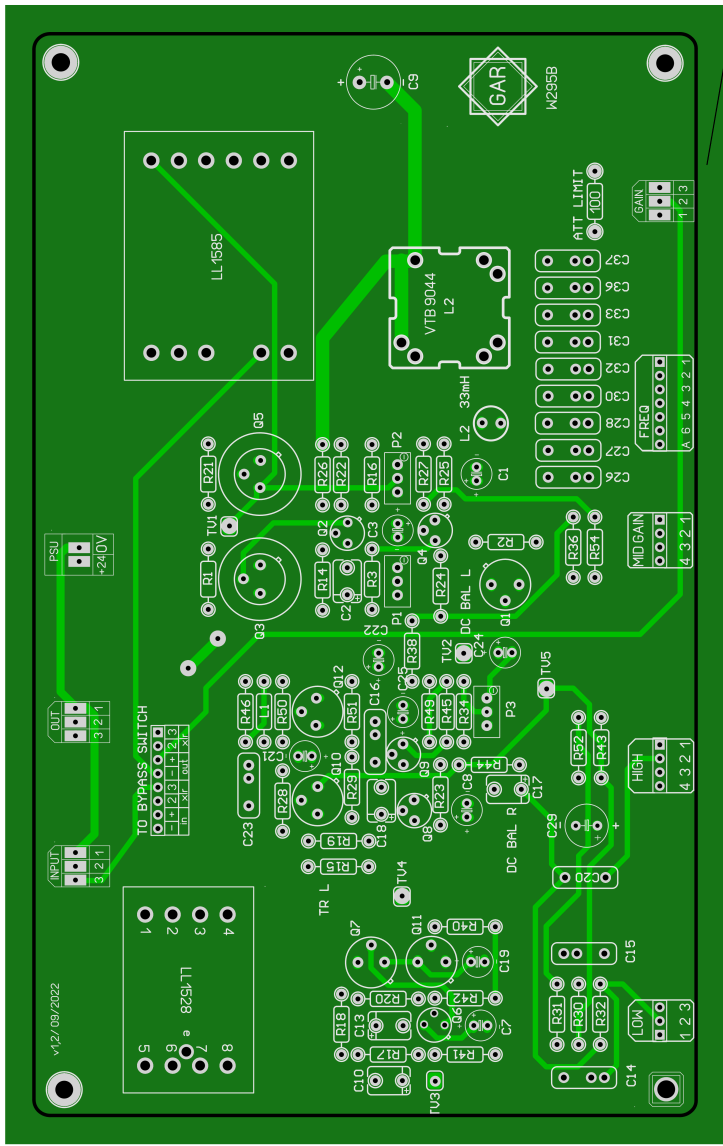


input →

output ←

Vdc input →



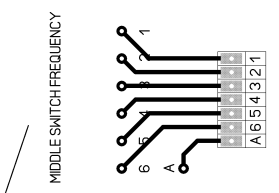
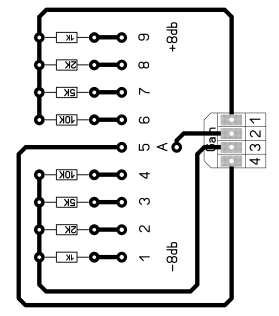
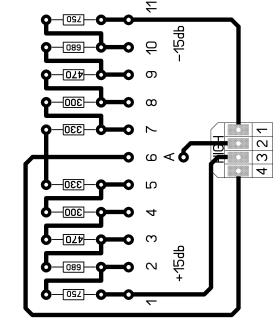
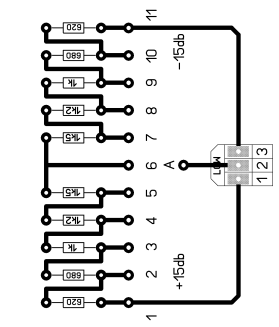
potentiometre 1K log

LOW SWITCH

HIGH SWITCH

MIDDLE SWITCH-GAIN

MIDDLE SWITCH-FREQUENCY



FREQ
1=0.7KHZ
2=1khz
3=1.5khz
4=2.3khz
5=3.5khz
6=5.6khz